

Pillow Speaker Hook Up

Connect a pillow speaker to the LCD TV/Monitor.

- 1** Locate the Pillow Speaker output jack on the back of the LCD TV/Monitor.
- 2** Connect an accessory pillow speaker or wired remote control unit to this 6-pin jack.
- 3** Select PILLLOW SPEAKER on the rear panel of the LCD TV/Monitor.

***Notes:** If the pillow speaker switch is set to Pillow Speaker, no sound will be heard from the TV speakers. If pillow speaker switch is set to the Pillow Speaker position, Auto Volume will be grayed out and not accessible on the Sound menu.

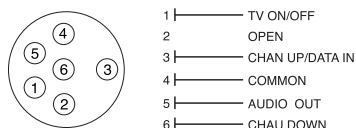
Use a pillow speaker by Curbell, Model A-16455-02 or other UL recognized pendant control bearing the warning: **“Risk of fire if used in oxygen enriched atmosphere. Keep pendant control away from oxygen equipment.”**

Controlling the TV with Serial Data

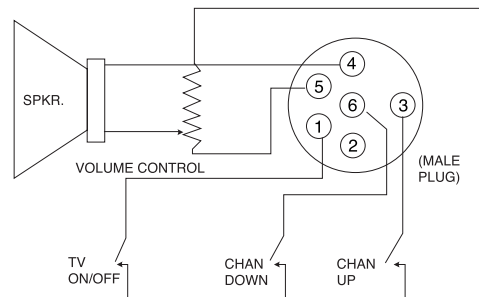
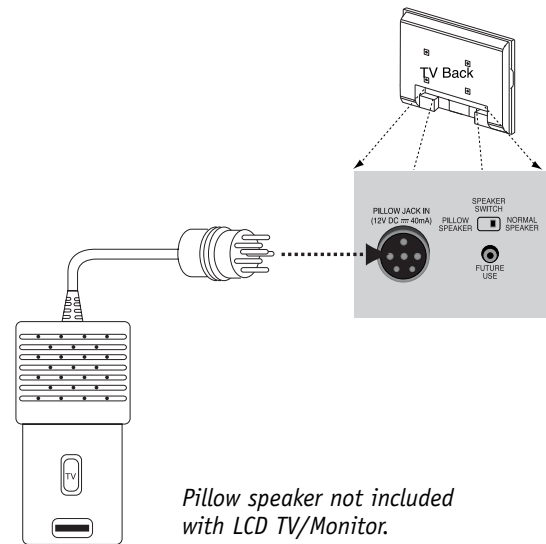
The TV is capable of being controlled by a single-wire, serial data signal. This is a Zenith patented technology and is being implemented by certain brands of “smart” pillow speakers, such as Curbell’s “GEN-II” models.

Pillow Speaker Interface

This connector furnishes three control lines and an audio output. A patient-pendant remote control, or entertainment audio and nurse call system may be connected here. All lines are isolated from the AC power line and earth ground. (Optoisolators isolate the control lines, and a transformer isolates the audio. There are no relays or inductive components in the control lines.)



Pin No.	Purpose
1	External TV On/Off switch.
2	(Not used.)
3	External Channel Up switch or Data in.
4	Common connection for control, data, and audio output. Impedance to earth ground is a 10-meg resistor in parallel with a 1100 pf capacitor.
5	Isolated audio output. Nominal 14-ohm source impedance with short circuit protection. Intended for a pillow speaker with a low-impedance pad-type volume control.
6	External Channel Down switch.



Controlling the TV with Mechanical Switches

Pin 4 (common) is momentarily connected to pin 1, 3, or 6 via push-action switches to control On/Off and Channel Up/Down. These pins are at +13 volts DC (when measured from pin 4) with the switches open. Current draw is 8 mA when a switch is closed. (This operation is identical to previous Zenith models using the 5-Wire Interface except that only +7 volts DC was supplied and current draw was only 2.5 mA.)